

Leaving home ain't easy

BY IMPLEMENTING THIS PROJECT, WE WANT YOUNG PEOPLE TO UNDERSTAND HUMAN RIGHTS BASED ON REFUGEES, MIGRANTS AND ASYLUM SEEKERS AND CAN RELATE THEM TO DIFFERENT SITUATIONS SUCH AS MEDIA DECEPTION, DISCRIMINATION AND HATE SPEECH. WE WANT THEM TO BE ABLE TO THINK CRITICALLY AND IMPROVE THEIR ARGUMENTS AGAINST NEGATIVE STEREOTYPES BY COMBINING ART AND HUMAN RIGHTS AND PROMOTE SOCIAL INCLUSION. THROUGH THIS PROJECT WE WANT TO PROMOTE THE SOCIAL INCLUSION OF DISADVANTAGED GROUPS AND 42 YOUNG PEOPLE FROM 6 DIFFERENT COUNTRIES TO RAISE THEIR AWARENESS OF THE MIGRANT CRISIS AND SHOW THEM DIFFERENT EXAMPLES TO STIMULATE THEIR CRITICAL THINKING. IN ADDITION, WE WANT TO DEMONSTRATE THAT FEAR OF THE OTHER IN PUBLIC OPINION IS OFTEN CONVEYED THROUGH THE MEDIA AND SOCIAL NETWORKS.

8 TO 17 OF APRIL 2024 - BREBU - ROMANIA (TRAVELING DAYS 8 AND 17)

THE COORDINATOR OF THE PROJECT
ASOCIATIA "GRUP DE ACTIUNE LOCALA BANAT-VEST", ROMANIA

PARTNERS:

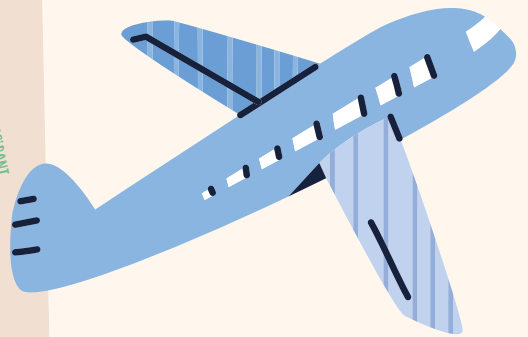
ASOCIATIA "GRUP DE ACTIUNE LOCALA BANAT-VEST" (RO) - TAVO EUROPA (LT) - RROMA (MK) - KULTUR KOPRUSU EGITIM VE GENCLIK DERNEGI (TR) - ASOCIACION SOMOS EUROPA (ESP) - INCLUSION GO (IT)

7+1 (GROUP LEADER) PARTICIPANTS BETWEEN 18 AND 24 YEARS OLD FROM EACH COUNTRY

TRANSPORTATION

- THE NEAREST AIRPORT IS TIMISOARA, FROM WHERE WE WILL PICK YOU UP AND BRING YOU TO THE VENUE (AROUND 100 KM);
 - ANOTHER OPTION IS BELGRADE – WE CAN ALSO ARRANGE PICKUPS BUT IT WILL BE A SPECIFIC HOUR FOR PICKING UP ALL GROUPS, DEPENDING ON THE ARRIVAL OF LAST GROUP. THIS WILL ENSURE A CHEAPER TRANSFER WHICH WILL BE TAKEN DIRECTLY FROM THE REIMBURSEMENT BUDGET, YOU WILL NOT HAVE TO PAY IT YOURSELF.
 - WE CAN ASSIST YOU IN COMING EVEN FROM BUDAPEST (FROM WHERE A 2 WAYS TRANSFER IS AROUND 80 EURO) BY CONTRACTING THE TRANSFER COMPANIES FROM TIMISOARA, WHICH WILL PICK YOU UP FROM THE AIRPORT OR TRAIN STATION. YOU CAN ALSO TAKE A TRAIN FROM THERE TO TIMISOARA, IS A BIT CHEAPER. ([HTTPS://WWW.BAHN.DE/P/VIEW/INDEX.SHTML](https://www.bahn.de/p/view/index.shtml)) FROM TIMISOARA WE WILL ARRANGE PICK-UPS.
 - IF YOU TRAVEL BY TRAIN
- IF YOU TRAVEL BY TRAIN THE FINAL STOP SHOULD BE TIMISOARA NORD OR RESITA NORD, FROM WHERE WE WILL PICK YOU UP! TIMISOARA HAS DIRECT TRAINS FROM MOST OF THE EUROPEAN CITIES. (LINK TO CHECK OUT THE CONNECTIONS: [HTTPS://WWW.BAHN.DE/P/VIEW/INDEX.SHTML](https://www.bahn.de/p/view/index.shtml))

DISTANCE BAND
100-499 KM 180 EUR
500-1999 KM 275 EUR
2000-2999 KM 360 EUR
TRAVEL GRANT / PARTICIPANT



ACCOMMODATION

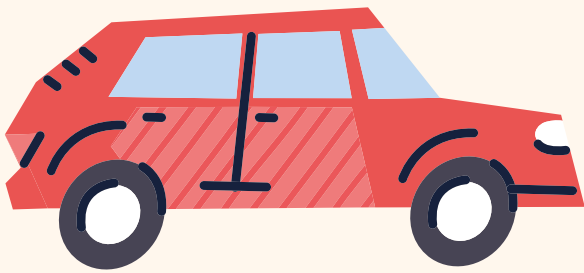
FOR THIS YE, THE PARTICIPANTS WILL BE ACCOMMODATED IN „LA PADURE”, IN 2 TO 5 BED ROOMS, MIXED INTERNATIONAL, BUT NOT GENDER ☺. EACH ROOM HAS ITS OWN BATHROOM.

[f HTTPS://WWW.FACEBOOK.COM/LAPADUREINBREBU](https://www.facebook.com/lapadureinbrebu)

THE CAMP HAS INTERNET, VIDEO PROJECTOR, CONFERENCE ROOM, OUTSIDE TENT, OWN DINING ROOM AND A BIG GREEN YARD TO ENJOY THE FREE TIME. YOU SHOULD BRING YOUR OWN HYGIENIC PRODUCTS, FLIP FLOPS, HOUSE SHOES, INCLUDING TOWELS. BED SHEETS ARE PROVIDED BY LA PADURE CAMP.

THE ADDRESS OF THE CAMP IS:

 DN 58 KM 24 + 800 ST 327045 BREBU (BEFORE THE ENTRANCE IN THE VILLAGE) COMING FROM SOCENI. CARAS-SEVERIN COUNTY, ROMANIA



FOOD

We provide three meals per day, snacks and coffee. Please contact your team leader about any allergies or special needs that you might have.



FINANCIAL CONTIONS

ACCOMMODATION, FOOD AND MATERIALS DURING ACTIVITY DAYS AS WELL AS VISA COSTS (IF NEEDED) ARE FULLY COVERED BY THE PROJECT.

• TRAVEL COSTS FOR THE MEETING WILL BE REIMBURSED WHEN INVOICES, E-TICKETS, BOARDING PASSES AND OTHER TICKETS ARE DELIVERED TO THE HOST NGO ACCORDING TO ERASMUS + RULES. WE HAVE A SPECIFIC DOCUMENT.

• PLEASE HAVE IN MIND THAT FROM THE TOTAL AMOUNT OF GRANT/PARTICIPANT WE WILL COVER THE TRANSFERS FROM TIMISOARA, BELGRADE, BUDAPEST OR RESITA. PLEASE DISCUSS WITH THE ORGANIZERS AND SENDING ORGANIZATION BEFORE BUYING THE TICKETS.



OTHER INFORMATIONS

THE CURRENCY - IN ROMANIA THE CURRENCY IS RON, WE DO NOT USE EURO. 1 EUR = 5 RON | THERE IS NO SUPERMARKET IN THE VILLAGE BUT SMALL FAMILY SHOPS. WHEN IN RESITA, YOU WILL BE ABLE TO GO TO CARREFOUR SUPERMARKET AND SOUVENIR SHOPS, IF YOU DESIRE.

HEALTH INSURANCE - ALL PARTNERS HAVE THE RESPONSIBILITY IN ASSISTING THE PARTICIPANTS FOR OBTAINING THE EHIC (EUROPEAN HEALTH INSURANCE CARD) WHICH IS FREE, OR THE PARTICIPANTS WILL TAKE CARE OF THIS ASPECT BY THEMSELVES. IN ROMANIA THE EMERGENCY SERVICES IN HOSPITALS ARE FREE BUT LET'S HOPE IT DOESN'T COME TO THIS ☺

EACH GROUP WILL HAVE A CULTURAL NIGHT DURING THE PROJECT. PLEASE CONSULT WITH YOUR TEAM ABOUT PREPARING SOME NATIONAL FOOD, PRESENTATION OF YOUR COUNTRY. DON'T BE SHY TO BRING SOME MUSIC OR GAME OF YOURS!

